

Charlotte  
Rubino  
Gemma



- CHARLOTTE 100% Merino Wool Super 15µm  
Washing Free Yarn  
Available with Papi Washable  
Charcoal and Blue Washable
- CHARLOTTE 100% Merino Wool Super 15µm  
Washing Free Yarn  
Available with Papi Washable  
Charcoal and Blue Washable
- CHARLOTTE 100% Merino Wool Super 15µm  
Washing Free Yarn  
Available with Papi Washable  
Charcoal and Blue Washable
- RUBINO 100% Merino Wool Super 15µm  
Washing Free Yarn  
Available with Papi Washable  
Charcoal and Blue Washable
- GEMMA 100% Merino Wool Super 15µm  
Washing Free Yarn  
Available with Papi Washable  
Charcoal and Blue Washable



**ULTRAFINE MERINO WOOL  
RWS - NO MULESING**

La valorizzazione delle Fibre Naturali è tratto distintivo di **PAPI FABIO** all'insegna della sostenibilità come emblema del nuovo lusso.

Questi preziosi filati sono realizzati con esclusive lane merino ultrafine certificate anche **RWS** e **Mulesing Free**.

**RWS** (Responsible Wool Standard) promosso da Textile Exchange è uno standard indipendente, il cui protocollo garantisce il completo controllo delle materie prime e certifica che la lana impiegata provenga solo da fattorie dove l'allevatore tutela sia il territorio che la salute ed il benessere degli animali; in questi ambienti protetti è tassativamente esclusa la crudele azione del Mulesing.

“**Mulesing Free**” è certificato “cradle to cradle”.

Tutto in completa trasparenza della supply chain con un sistema di tracciabilità integrato.

Noi di **PAPI FABIO** ne garantiamo lo stile e la qualità.

*The enhancement of natural fibers is the distinctive trait of **PAPI FABIO** which selects the finest wools through eco-responsible and eco-sustainable production processes.*

*These precious yarns are produced with exclusive ultrafine merino wool also **RWS** and **Mulesing Free** certified.*

***RWS** (Responsible Wool Standard) promoted by Textile Exchange is an independent standard, whose protocol guarantees complete control of raw materials and certifies that the wool used comes only from farms where the breeder protects both the territory and the health and welfare of the animals; in these protected environments the cruel action of Mulesing is strictly excluded.*

*“**Mulesing Free**” is certified “cradle to cradle”.*

*All this in complete transparency of the supply chain with an integrated traceability system.*

*We at **PAPI FABIO** guarantee its style and quality.*

**TOP** **CHARLOTTE** Nm 2/48000  
70% Ultrafine Merino Wool Super 120'S  
30% Silk  
**MULESING FREE WOOL**  
Conforms with Detox Standards

n° 34 Colori Stock Service  
Stock Service supported colours



RWS certified wool  
Certified by ICEA  
ICEA-TX-402

**TOP** **CHARLOTTE** Nm 2/60000  
70% Ultrafine Merino Wool Super 120'S  
30% Silk  
**MULESING FREE WOOL**  
Conforms with Detox Standards

n° 43 Colori Stock Service  
Stock Service supported colours



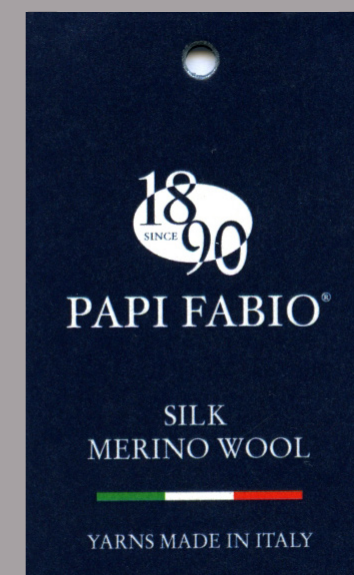
RWS certified wool  
Certified by ICEA  
ICEA-TX-402

**CHARLOTTE** Nm 2/80000 - 2/120000  
70% Ultrafine Merino Wool Super 120'S  
30% Silk  
**MULESING FREE WOOL**  
Conforms with Detox Standards

**TOP** **RUBINO** Nm 2/56000  
70% Ultrafine Merino Wool Super 140'S  
20% Silk  
10% Cashmere  
**MULESING FREE WOOL**  
Conforms with Detox Standards

n° 35 Colori Stock Service  
Stock Service supported colours

**GEMMA** Nm 2/56000  
70% Cashmere  
30% Silk  
Conforms with Detox Standards



1



349 M  
●■▲\*  
glass

4096 M  
●■  
flint

4212 M  
●■▲  
cloud

4092 M  
●■  
velluto

354 M  
●■▲□\*  
antracite

2



5449 M  
●■□  
cool

351 M  
●■▲□\*  
argento

352 M  
●■▲□\*  
fumo

353 M  
●■▲□  
ferroviere

4084 M  
●■▲  
tronco

3



4081 M  
conchiglia

4082 M  
●■  
navajo

4100 M  
●■  
spoletta

4089 M  
●■  
sabbia

4090 M  
●■▲  
piombo

4



305 C  
●■▲□  
ottico

306 C  
●■▲\*  
ecru

4000 C  
aglio

4112 C  
●■▲  
almond

241 C  
●■▲  
onice

5



4577 C  
pastel

4401 C  
●■▲  
soft

4402 C  
●■  
farfalla

4404 C  
silver

4405 C  
cipria

6



4406 C  
●■  
candy

4407 C  
▲  
nadeshiko

4408 C  
▲  
powder

4409 C  
celadon

4410 C  
bisque

7



4041 C  
●■  
mais

4549 S  
senape

4562 S  
mimetico

4006 S  
▲  
visone

4555 S  
●■▲  
daino

8



4601 C  
arancia

4265 S  
■▲  
oro

4002 S  
●■▲  
camoscio

4571 S  
castagna

4606 S  
▲  
mogano

9



4273 C  
pumpkin

4591 S  
▲  
cannella

4598 S  
■  
mattone

4599 S  
■▲  
brunello

359 S  
●■▲□\*  
nero

10



4412 C  
tomato

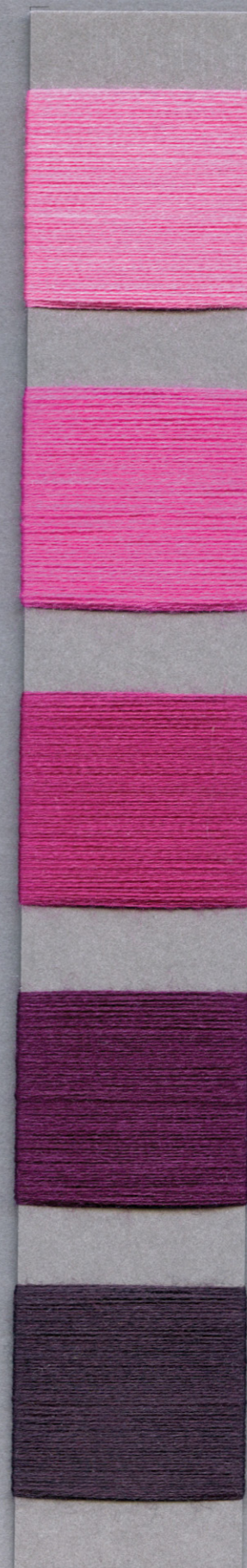
342 C  
garanza

4180 S  
●■▲□  
sanguigno

4034 S  
porpora

5899 S  
●■▲  
garnet

11



4413 C  
confetto

4278 C  
●■  
flash

4045 S  
▲  
licis

4588 S  
uva

4085 S  
●■▲  
chianti

12



4414 C  
■  
eliotropo

4282 S  
●■  
prunus

4587 S  
wine

4589 S  
eggplant

445 S  
●■▲□\*  
bleu

13

14

15



4580 C  
●■  
caraibi

4603 S  
■▲□  
cobalto

4604 S  
admiral

4073 S  
■  
deep

4584 S  
■  
ocean

4432 C  
■  
turchese

4285 C  
●■▲  
bright

4579 S  
malachite

411 S  
●■▲□  
notte

4226 S  
▲  
slate

4420 C  
avocado

4421 S  
●■  
reseda

4597 S  
■▲  
smeraldo

4169 S  
●■▲  
foresta

4031 S  
●▲  
muschio

M melange C chiari / light S scuri / dark

LEGENDA

Colore	Colonna	Colore	Colonna	Colore	Colonna	Colore	Colonna	Colore	Colonna					
241 C	●■▲	4	4031 S	●▲	15	4169 S	●■▲	15	4408 C	▲	6	4580 C	●■	13
305 C	●■▲□	4	4034 S		10	4180 S	●■▲□	10	4409 C		6	4584 S	■	13
306 C	●■▲*	4	4041 C	●■	7	4212 M	●■▲	1	4410 C		6	4587 S		12
342 C		10	4045 S	▲	11	4226 S	▲	14	4412 C		10	4588 S		11
349 M	●■▲*	1	4073 S	■	13	4265 S	■▲	8	4413 C		11	4589 S		12
351 M	●■▲□*	2	4081 M		3	4273 C		9	4414 C	■	12	4591 S	▲	9
352 M	●■▲□*	2	4082 M	●■	3	4278 C	●■	11	4420 C		15	4597 S	■▲	15
353 M	●■▲□	2	4084 M	●■▲	2	4282 S	●■	12	4421 S	●■	15	4598 S	■	9
354 M	●■▲□*	1	4085 S	●■▲	11	4285 C	●■▲	14	4432 C	■	14	4599 S	■▲	9
359 S	●■▲□*	9	4089 M	●■	3	4401 C	●■▲	5	4549 S		7	4601 C		8
411 S	●■▲□	14	4090 M	●■▲	3	4402 C	●■	5	4555 S	●■▲	7	4603 S	■▲□	13
445 S	●■▲□*	12	4092 M	●■	1	4404 C		5	4562 S		7	4604 S		13
4000 C		4	4096 M	●■	1	4405 C		5	4571 S		8	4606 S	▲	8
4002 S	●■▲	8	4100 M	●■	3	4406 C	●■	6	4577 C		5	5449 M	●■□	2
4006 S	▲	7	4112 C	●■▲	4	4407 C	▲	6	4579 S		14	5899 S	●■▲	10

CHARLOTTE

Nm 2/48000 - Nm 2/60000

- STOCK SERVICE Colours, min. kg 1 Nm 2/48000
- STOCK SERVICE Colours, min. kg 1 Nm 2/60000



RWS certified wool  
Certified by ICEA  
ICEA-TX-402

CHARLOTTE

Nm 2/80000 - Nm 2/120000

- \* Nm 2/80000 Ready for Sampling Colours, min. kg 1

RUBINO Nm 2/56000

- ▲ STOCK SERVICE Colours, min. kg 1

GEMMA Nm 2/56000

- Ready for Sampling Colours, min. kg 1

MINIMI DI PRODUZIONE E COTTE OTTIMALI  
PRODUCTION MINIMUMS AND OPTIMAL DYELOTS

Colori mélange a campione o non a Stock Service min. kg 100, da kg 50 a kg 100 con supplemento.  
Colori uniti a campione o non a Stock Service kg 21 oppure kg 2/4/6/8/10/15 con supplemento.  
Customer's or non-Stock Service melange colours min. kg 100, from kg 50 to kg 100 with surcharge.  
Customer's or non-Stock Service solid colours kg 21 or kg 2/4/6/8/10/15 with surcharge.

COTTE IDEALI COLORI UNITI  
OPTIMAL DYELOTS SOLID COLOURS  
KG 2 - 4 - 6 - 8 - 10 - 15 - 21 - 30 - 40 - 50 - 100