

Settantatrenta
Dorothy
Dorothy Mouliné
Santiago



**ULTRAFINE MERINO WOOL
RWS - NO MULESING**

La valorizzazione delle Fibre Naturali è tratto distintivo di **PAPI FABIO** all'insegna della sostenibilità come emblema del nuovo lusso.

Questi preziosi filati sono realizzati con esclusive lane merino ultrafine certificate anche **RWS** e **Mulesing Free**.

RWS (Responsible Wool Standard) promosso da Textile Exchange è uno standard indipendente, il cui protocollo garantisce il completo controllo delle materie prime e certifica che la lana impiegata provenga solo da fattorie dove l'allevatore tutela sia il territorio che la salute ed il benessere degli animali; in questi ambienti protetti è tassativamente esclusa la crudele azione del Mulesing.

"**Mulesing Free**" è certificato "cradle to cradle".

Tutto in completa trasparenza della supply chain con un sistema di tracciabilità integrato.

Noi di **PAPI FABIO** ne garantiamo lo stile e la qualità.

*The enhancement of natural fibers is the distinctive trait of **PAPI FABIO** which selects the finest wools through eco-responsible and eco-sustainable production processes.*

*These precious yarns are produced with exclusive ultrafine merino wool also **RWS** and **Mulesing Free** certified.*

***RWS** (Responsible Wool Standard) promoted by Textile Exchange is an independent standard, whose protocol guarantees complete control of raw materials and certifies that the wool used comes only from farms where the breeder protects both the territory and the health and welfare of the animals; in these protected environments the cruel action of Mulesing is strictly excluded.*

*"**Mulesing Free**" is certified "cradle to cradle".*

All this in complete transparency of the supply chain with an integrated traceability system.

*We at **PAPI FABIO** guarantee its style and quality.*

TOP **SETTANTATRENTA** Nm 1/15000
70% Ultrafine Merino Wool
30% Cashmere
MULESING FREE WOOL

n° 45 Colori Stock Service
Stock Service supported colours



RWS certified wool
Certified by ICEA
ICEA-TX-402

TOP **DOROTHY** Nm 1/15500
90% Ultrafine Merino Wool
10% Cashmere
MULESING FREE WOOL

n° 65 Colori Stock Service
Stock Service supported colours



RWS certified wool
Certified by ICEA
ICEA-TX-402

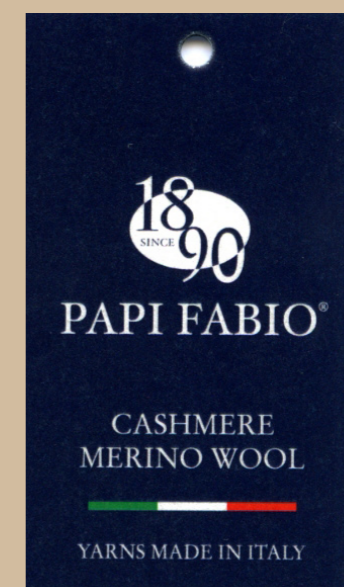
TOP **SANTIAGO** Nm 1/15500
100% Ultrafine Merino Wool
MULESING FREE WOOL
Conforms with Detox Standards

n° 50 Colori Stock Service
Stock Service supported colours



RWS certified wool
Certified by ICEA
ICEA-TX-402

DOROTHY MOULINÉ Nm 2/15500
90% Ultrafine Merino Wool
10% Cashmere



1

2

3

4

5

6

2024 TM
●
ottico

9161
●■▲
neve

390
●■▲
lino

2364
▲
lemon

2449
rose

2187
●■▲
delicato

2271
●■▲
opaco

999
●■▲
naturale

2247
■
silk

2315
●
ananas

2451
cocomero

2452
●■▲
barbie

502
●■▲
pergamena

2245
leggero

2249
cannella

2365
■▲
orange

227
●■▲
ciliegia

2341
●
cherry

770
●■▲
ostrica

2333
●■▲
sabbia

3097
brick

2411
●
zafferano

571
●■▲
cremisi

1348
gelso

2275
●
freddo

2246
●■▲
sasso

2317
●
caramel

713
●▲
tabasco

353
●■▲
bacca

351
●■▲
amarena

7

8

9

10

11

12

2453
candy

2331
lilac

2300
campanula

2458
●■▲
celeste

2003
●■▲
sogno

2349
timido

2454
●▲
confetto

2712
■
eliotropo

2286
●■▲
ceruleo

2459
▲
caraibi

1181
●■
ocean

2461
●
emerald

2282
■▲
ciclamino

2455
●
fiore

2457
klein

2460
■
fondale

2782
●■▲
contrasto

2176
tè

2285
●
magenta

2456
ametista

2091
●■
oxford

2193
●■▲
clemantis

1075
denim

2360
●
duke

2129
●
violetta

02
●■▲
nero

824
●■▲
notte

2006
●■▲
indigo

728
●■▲
oltremare

2356
●■
deep

13

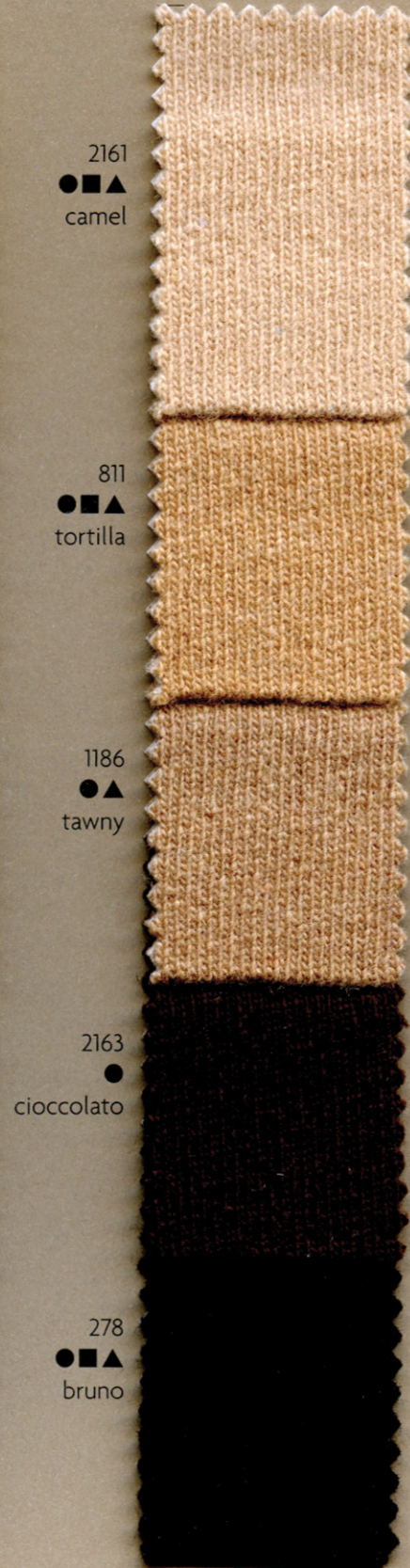
14

15

16

17

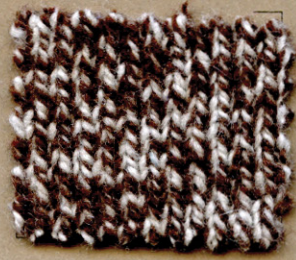
18



DOROTHY MOULINÉ Nm 2/15500

DOROTHY MOULINÉ Nm 2/15500

19



7498

20



6037

21



6760

22



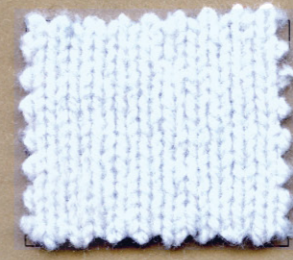
7569

23



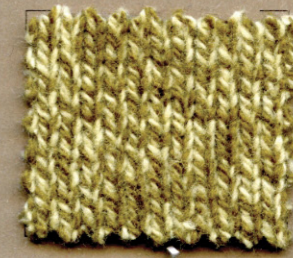
7574

24



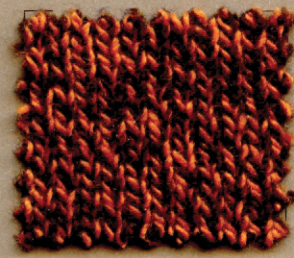
7963

25



7578

26



7579



7516



6780



7729



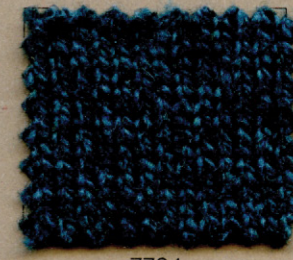
7570



7575



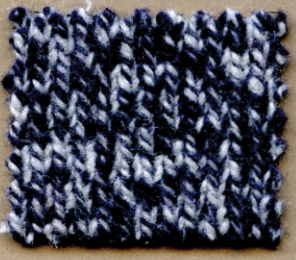
7740



7794



7580



7517



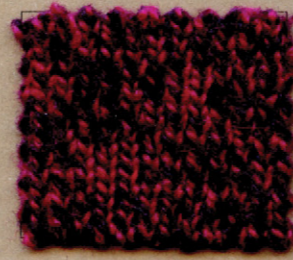
7732



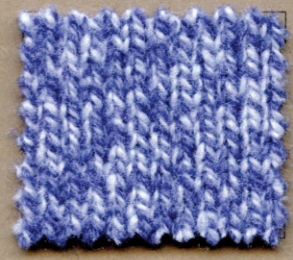
7771



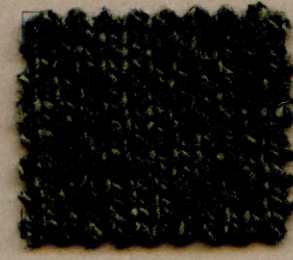
7571



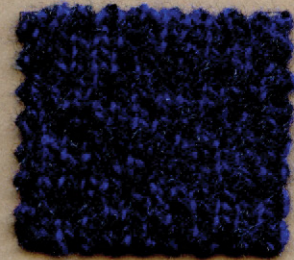
7576



7744



7797



7581



7518



6781



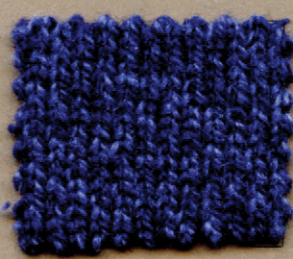
7733



7572



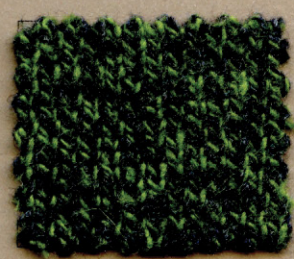
7774



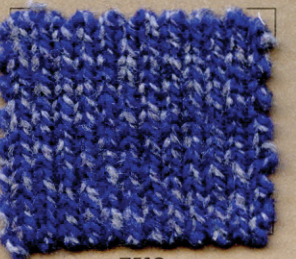
6777



7793



7582



7519



7567



7568



7573



7577



7788



7791



7583

LEGENDA

Colore	Colonna	Colore	Colonna	Colore	Colonna
02	●■▲	8	2245	●	2
203	●▲	16	2246	●■▲	2
204	●■▲	17	2247	■	3
206	●■▲	16	2249		3
227	●■▲	5	2271	●■▲	1
230	●	14	2275	●	1
265	●■▲	18	2282	■▲	7
278	●■▲	15	2285	●	7
339	●■	16	2286	●■▲	9
351	●■▲	6	2300		9
353	●■▲	5	2315	●	4
365	●■▲	14	2317	●	3
390	●■▲	3	2331		8
502	●■▲	1	2333	●■▲	2
571	●■▲	5	2341	●	6
621	●■▲	18	2349		12
622	●■▲	18	2356	●■	12
654	●■▲	18	2360	●	12
655	●■▲	18	2364	▲	4
675	●■▲	17	2365	■▲	4
713	●▲	4	2411	●	4
728	●■▲	11	2449		5
770	●■▲	1	2451		5
811	●■▲	15	2452	●■▲	6
824	●■▲	9	2453		7
999	●■▲	2	2454	●▲	7
1075		11	2455	●	8
1181	●■	11	2456		8
1186	●▲	15	2457		9
1207		17	2458	●■▲	10
1215	●	17	2459		10
1348		6	2460	■	10
2003	●■▲	11	2461	●	12
2006	●■▲	10	2462		13
2024 TM	●	1	2463	●	13
2091	●■	9	2464	■	13
2129	●	7	2465		14
2134	●■▲	13	2466	●	14
2161	●■▲	15	2467	●■▲	14
2163	●	15	2468	●■▲	16
2176		12	2470	●■	17
2187	●■▲	6	2712	■	8
2188	●■	13	2782	●■▲	11
2193	●■▲	10	3097		3
			6037		20
			6760		21
			6777		24
			6780		20
			6781		20
			7498		19
			7516		19
			7517		19
			7518		19
			7519		19
			7567		20
			7568		21
			7569		22
			7570		22
			7571		22
			7572		22
			7573		22
			7574		23
			7575		23
			7576		23
			7577		23
			7578		25
			7579		26
			7580		26
			7581		26
			7582		26
			7583		26
			7729		21
			7732		20
			7733		21
			7740		24
			7744		24
			7771		21
			7774		23
			7788		24
			7791		25
			7793		25
			7794		25
			7797		25
			7925	●	16
			7963		24
			9161	●■▲	2

SETTANTATRENTA Nm 1/15000 ▲ Stock Service

DOROTHY Nm 1/15000 ● Stock Service

SANTIAGO Nm 1/15500 ■ Stock Service



Colori Stock Service: Quantità minima in fase di ordini 1 box per colore (circa 20 kg) o multipli.
Stock Service supported colours: Minimum quantity for bulk orders 1 box per color (approx 20 kgs) or multiples.

Quantità per campionatura e produzione

Sampling and production quantities DOROTHY/SANTIAGO

Colori non a Stock Service o a campione: per campionatura min. kg 70 con supplemento, per produzione da kg 150 a kg 290 con supplemento, oltre kg 300 nessun supplemento.
Non Stock Service supported colours and Customer's own colours: for sampling min kg 70 with surcharge, for production from kg 150 to kg 290 with surcharge, over kg 300 without surcharge.

Colori uniti a campione o non a Stock Service, da kg 21 oppure kg 5/10/15 con supplemento.
Customer's or non Stock Service solid colours from kg 21 or kg 5/10/15 with surcharge.

Quantità per campionatura e produzione

Sampling and production quantities SETTANTATRENTA

Colori non a Stock Service o a campione: per campionatura min. kg 70 con supplemento, per produzione minimo kg 150 per colore senza supplemento.
Non Stock Service supported colours and Customer's own colours: for sampling min kg 70 with surcharge, for production minimum kg 150 per colours without surcharge.

Colori uniti a campione o non a Stock Service, da kg 21 oppure kg 5/10/15 con supplemento.
Customer's or non Stock Service solid colours from kg 21 or kg 5/10/15 with surcharge.

DOROTHY MOULINÉ Nm 2/15500

Per campionatura min. 2 kg. a colore. Per produzione min. 40 kg. a colore senza supplemento, sotto 40 kg. con supplemento.
For sampling min. 2 kg. per color. For production min. 40 kg. per color without surcharge, under 40 kg. with surcharge.