

Ametista
 Ametista Stretch - Crêpe
 Topazio
 Topazio Stretch
 Sweet
 Excellence

LEGENDA

Colore	Colonna	Colore	Colonna
4232	10	4583	6
4241	6	4584	7
4247	5	4586	8
4253	11	4587	9
4258	14	4588	10
4265	15	4589	11
4275	6	4590	12
4276	8	4591	13
4278	9	4592	14
4278	10	4593	15
4292	4	4594	16
4352	4	4595	17
4366	4	4596	18
4577	4	4597	19
4578	4	4598	20
4579	5	4599	21
4580	5	5899	22
4581	5		
4582	6		

AMETISTA Nm 2/52000 - Nm 2/60000
 O STOCK SERVICE Colours, min. kg 1 Nm 2/52000
 ● STOCK SERVICE Colours, min. kg 1 Nm 2/60000

TOPAZIO Nm 2/80000 - Nm 3/80000
 □ STOCK SERVICE Colours, min. kg 1 Nm 2/80000

SWEET Nm 2/80000
 ■ STOCK SERVICE Colours, min. kg 1

EXCELLENCE Nm 2/80000 - Nm 3/80000
 ▲ STOCK SERVICE Colours, min. kg 1

AMETISTA CRÊPE Nm 2/36000 / **AMETISTA STRETCH** Nm 2/54000
 MINIMI PER COLORE / MINIMUMS FOR COLOUR:
 Colori uniti a campione o non a Stock Service kg 21 oppure kg 2/4/6/8/10/15 con supplemento.
 Customer's or non-Stock Service melange solid colours min. 100 kg, from kg 50 to kg 100 with surcharge.
 COTTE IDEALI COLORI UNITI / OPTIMAL DYELOTS SOLID COLOURS:
 KG 2 - 4 - 6 - 8 - 10 - 15 - 21 - 30 - 40 - 50 - 100



PAPI FABIO

SOFT MELANGE

4078 M R vetro
 4074 M R silver
 4072 M R smoke
 4079 M R railway
 4081 M R rubie
 4087 M ●●● favo
 4087 M ●●● labia
 4090 M ● pombo
 4097 M ● melizo
 4114 M ●●● strage
 4114 M ●●● strage

PAPI FABIO

PAPI FABIO

PAPI FABIO

PAPI FABIO

100%
ULTRAFINE MERINO WOOL
RWS

La valorizzazione delle Fibre Naturali è tratto distintivo di **PAPI FABIO** all'insegna della sostenibilità come emblema del nuovo lusso.

Questi filati preziosi sono realizzati con esclusive lane merino ultrafini anche certificate RWS (Responsabile Wool Standard).

RWS è uno standard indipendente promosso da Textile Exchange che identifica, traccia, promuove e certifica la salubrità della lana impiegata nei processi produttivi, sia nel rispetto delle 5 libertà dell'animale - ambiente salubre, benessere, buon regime di vita, corretta gestione e soprattutto no mulesing - che nell'attenzione alla salute del territorio. Il tutto in un processo chiaro e trasparente di tracciabilità integrata della supply chain.

Noi di **PAPI FABIO** ne garantiamo stile e qualità.

*The enhancement of natural fibers is the distinctive trait of **PAPI FABIO** which selects the finest wools through eco-responsible and eco-sustainable production processes.*

These precious yarns are realized with selected ultrafine merino wools also RWS (Responsible Wool Standard) certified.

RWS is an independent standard promoted by Textile Exchange that identifies, tracks, promotes and certifies the healthiness of the wool used in the production processes, both in respect of the 5 freedoms of the animal - healthy environment, well-being, good lifestyle, correct management and above all no mulesing - that in the attention to the health of the territory. All in a clear and transparent process of integrated supply chain traceability.

*We at **PAPI FABIO** guarantee its style and quality.*

TOP AMETISTA Nm 2/52000
100% Ultrafine Merino Wool Super 120'S
RWS: SOLID COLOURS ON DEMAND
MULESING FREE WOOL
Conforms with Detox Standards

n° 18 Colori Stock Service
Stock Service supported colours



TOP AMETISTA Nm 2/60000
100% Ultrafine Merino Wool Super 120'S
RWS: SOLID COLOURS ON DEMAND
MULESING FREE WOOL
Conforms with Detox Standards

n° 25 Colori Stock Service
Stock Service supported colours
n° 27 Colori Stock Service
Stock Service supported colours



TOPAZIO Nm 2/80000 - 3/80000
100% Ultrafine Merino Wool Super 140'S
MULESING FREE WOOL
Conforms with Detox Standards

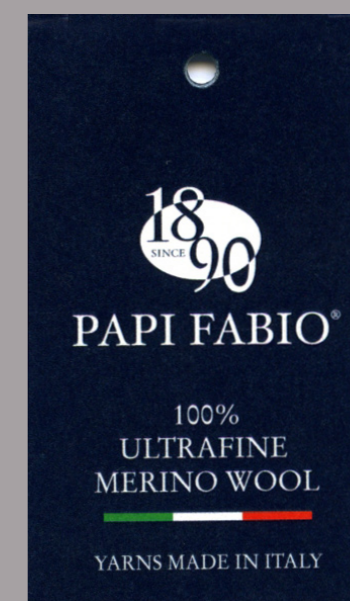
SWEET Nm 2/80000
100% Ultrafine Merino Wool Super 180'S
Conforms with Detox Standards

EXCELLENCE Nm 2/80000 - 3/80000
100% Ultrafine Merino Wool Super 200'S

AMETISTA CRÊPE Nm 2/56000
100% Ultrafine Merino Wool Super 120'S

AMETISTA STRETCH Nm 2/54000
94% Ultrafine Merino Wool Super 120'S - 6% PBT elite

TOPAZIO STRETCH Nm 2/70000
92% Ultrafine Merino Wool Super 140'S - 8% PBT elite
MULESING FREE WOOL



1
SOFT MELANGE

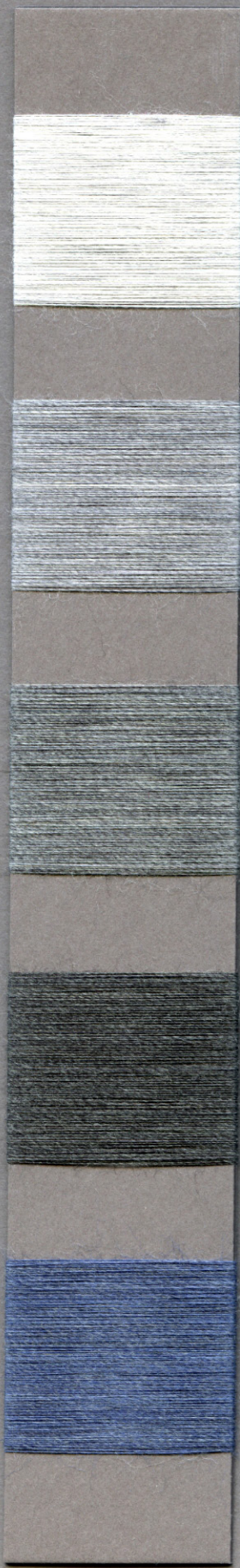
2

3

4

5

6



4078 M
R
vetro

4074 M
R
silver

4072 M
R
smoke

4079 M
R
railway

4083 M
R
nube



4082 M
●●□
navajo

4089 M
●▲
sabbia

4090 M
●
piombo

4092 M
●
velluto

4212 M
●●▲
cloud



349 M
●□
glass

351 M
●●▲
argento

352 M
●●□■
fumo

353 M
●●
ferroviere

354 M
●●■
antracite



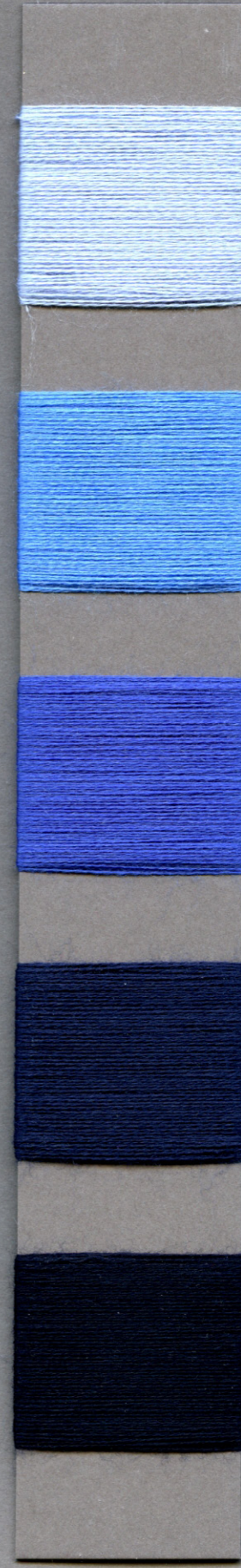
4577
R
zefiro

4566
●
azzurro

4578
martina

4579
R
mirto

236
●
oltremare



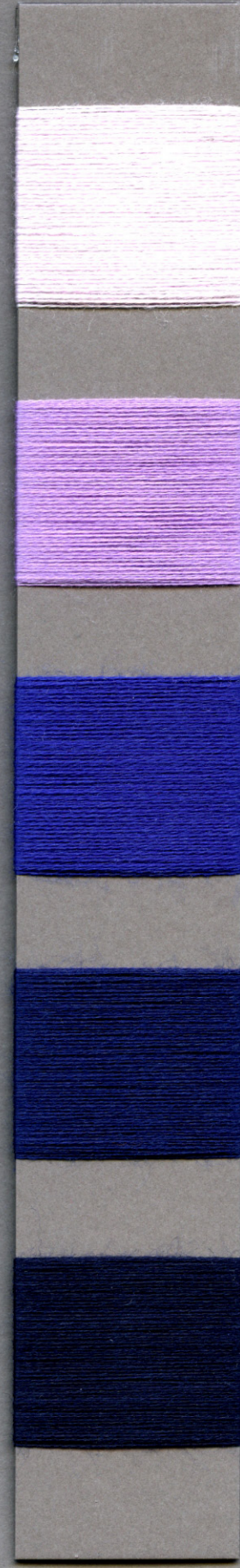
4253
○
fresco

4580
R
caraibi

4581
oceano

411
●○■
notte

445
●○R□■▲
bleu



4277
R
girl

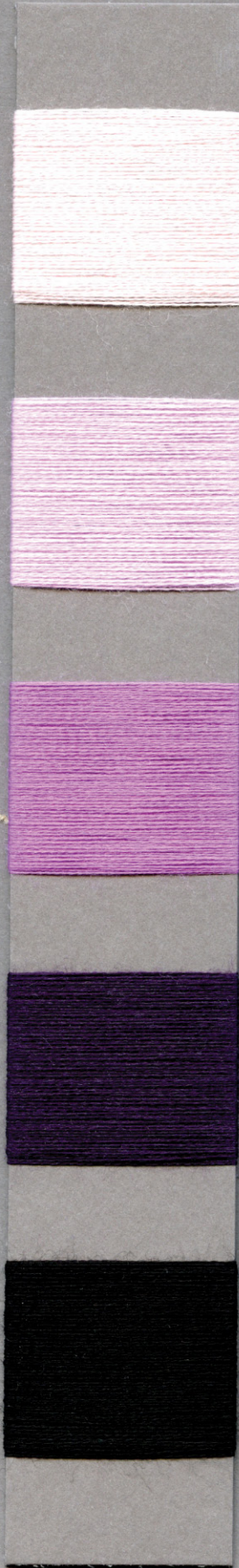
4582
iris

4241
lapis

4583
deeper

4584
R
copiativo

7



4221
crepe

4585
R
fiocco

4586
lilla

4587
wine

359
●●■▲
nero

8



4114
shocking

4278
R
flash

4045
licis

4588
uva

4589
●●
eggplant

9



4590
confetto

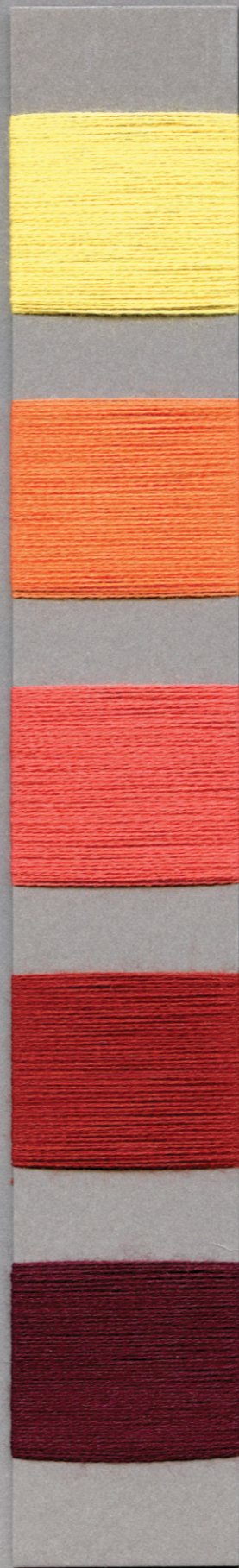
4292
anguria

4180
OR
sanguigno

4034
●●●
porpora

309
●
sottobosco

10



4232
blonde

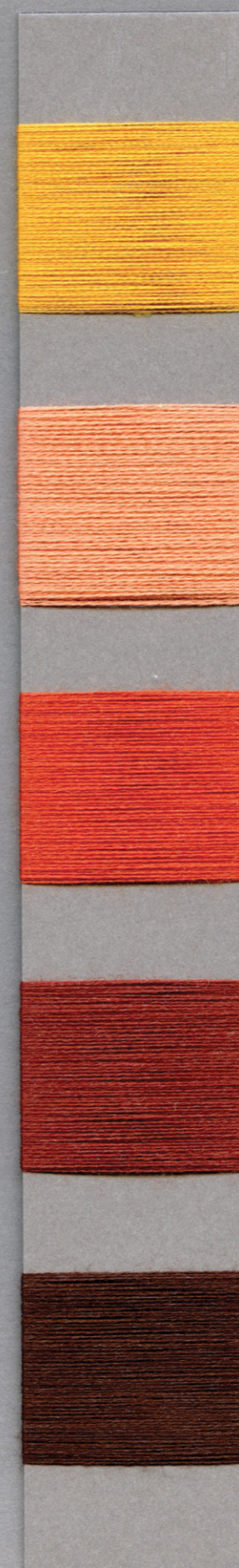
4247
zafferano

4552
○
scarlet

226
terra rossa

5899
garnet

11



4265
R
oro

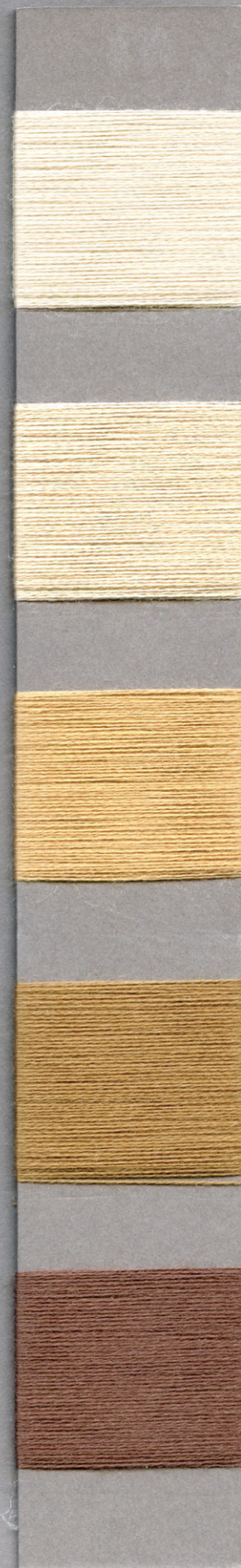
4258
cannella

4591
rame

4598
mattone

4599
brunello

12



306
●●●□
ecru

4004
R
avana

4592
R
legno

4002
●
camoscio

248
●
steppa

13



305
OOR
ottico

4000
aglio

241
R
onice

371
●
nocciola

4006
R
visone

14



4593
sun

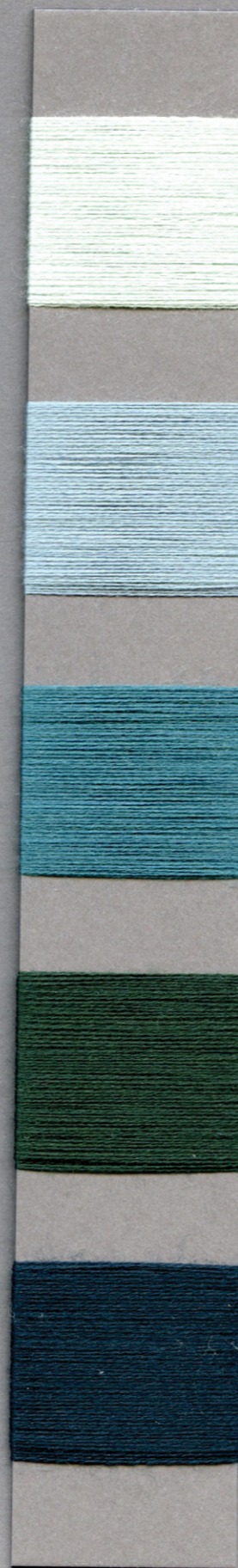
4128
●
saddle

4031
OR
muschio

4275
●
forest

4594
R
militare

15



4595
linfa

4596
menta

4597
R
smeraldo

4276
bosco

4126
OR
myrtle

M melange

LEGENDA

Colore	Colonna	Colore	Colonna	Colore	Colonna	Colore	Colonna
226	10	4006 R	13	4232	10	4583	6
236 ●	4	4031 OR	14	4241	6	4584 R	6
241 R	13	4034 OOR	9	4247	10	4585 R	7
248 ●	12	4045	8	4253 O	5	4586	7
305 OOR	13	4072M R	1	4258	11	4587	7
306 OOR□	12	4074M R	1	4265 R	11	4588	8
309 ●	9	4078M R	1	4275 ●	14	4589 O●	8
349 M ●□	3	4079M R	1	4276	15	4590	9
351 M O●▲	3	4082M O●□	2	4277 R	6	4591	11
352 M O●□■	3	4083M R	1	4278 R	8	4592 R	12
353 M O●	3	4089M ●▲	2	4292	9	4593	14
354 M O●■	3	4090M ●	2	4552 O	10	4594 R	14
359 OOR■▲	7	4092M ●	2	4566 ●	4	4595	15
371 ●	13	4114	8	4577 R	4	4596	15
411 O●■	5	4126 OR	15	4578	4	4597 R	15
445 OOR□■▲	5	4128 ●	14	4579 R	4	4598	11
4000	13	4180 OR	9	4580 R	5	4599	11
4002 ●	12	4212 M O●▲	2	4581	5	5899	10
4004 R	12	4221	7	4582	6		

AMETISTA Nm 2/52000 - Nm 2/60000

- O STOCK SERVICE Colours, min. kg 1 Nm 2/52000
- STOCK SERVICE Colours, min. kg 1 Nm 2/60000
- R STOCK SERVICE Colours, min. kg 1 Nm 2/60000



RWS certified wool
Certified by ICEA
ICEA-TX-402

TOPAZIO Nm 2/80000 - Nm 3/80000

- STOCK SERVICE Colours, min. kg 1 Nm 2/80000

SWEET Nm 2/80000

- STOCK SERVICE Colours, min. kg 1

EXCELLENCE Nm 2/80000 - Nm 3/80000

- ▲ STOCK SERVICE Colours, min. kg 1

MINIMI DI PRODUZIONE E COTTE OTTIMALI:

PRODUCTION MINIMUMS AND OPTIMAL DYELOTS:

Colori mélange a campione o non a Stock Service min. 100 kg, da kg 50 a kg 100 con supplemento.

Colori uniti a campione o non a Stock Service kg 21 oppure kg 2/4/6/8/10/15 con supplemento.

Customer's or non-Stock Service melange colours min. 100 kg, from kg 50 to kg 100 with surcharge.

Customer's or non-Stock Service solid colours kg 21 or kg 2/4/6/8/10/15 with surcharge.

COTTE IDEALI COLORI UNITI / OPTIMAL DYELOTS SOLID COLOURS:

KG 2 - 4 - 6 - 8 - 10 - 15 - 21 - 30 - 40 - 50 - 100

AMETISTA CRÊPE Nm 2/56000 / AMETISTA STRETCH Nm 2/54000

MINIMI PER COLORE / MINIMUMS FOR COLOUR:

Colori uniti a campione o non a Stock Service kg 21 oppure kg 2/4/6/8/10/15 con supplemento.

Customer's or non-Stock Service solid colours kg 21 or kg 2/4/6/8/10/15 with surcharge.